

CORPORATE

WeWork
Melbourne, VIC

Project Name: WeWork Melbourne
Client: Shape Australia
Designer: Hayball
Location: Melbourne CBD

Scope of Work:

Fabric Wall Panelling, Solid Timber Wall Panelling, Hot Desks, Phone Booth Seating & Desk, Printer Nook Joinery, Kitchen & Island Bench, Meeting Nook Seating & Desk, Mirrors and Vanity Joinery, Community Bar Joinery, Storage Joinery, Entry Banquette Seating, Pantry Joinery, Outdoor Bench Seating & Planter, Outdoor Bar, Outdoor Barbeque Bench, Mothers Room Joinery, Games Room, Waiting Booth, Honesty Market

Overview:

The modern coworking space in the heart of the CBD spans an impressive three floors, in a contemporary glass-walled building and embraces a spacious open plan layout. From breakout areas, offices, quiet rooms and a dedicated games room, the space provides the ideal work-life balance and facilitates dynamic and varied working styles. Aspen were engaged By Shape Group to manufacture architectural custom joinery, veneer wall paneling, upholstered banquette seating and an impressive community bar. The vivid colour scheme embraces a creative work style for everyone from entrepreneurs to small businesses and large enterprises. The result is a vivid and welcoming space where attention to detail has created a functional and collaborative environment in accord with WeWork's key values and branding.



PROJECT PROFILE

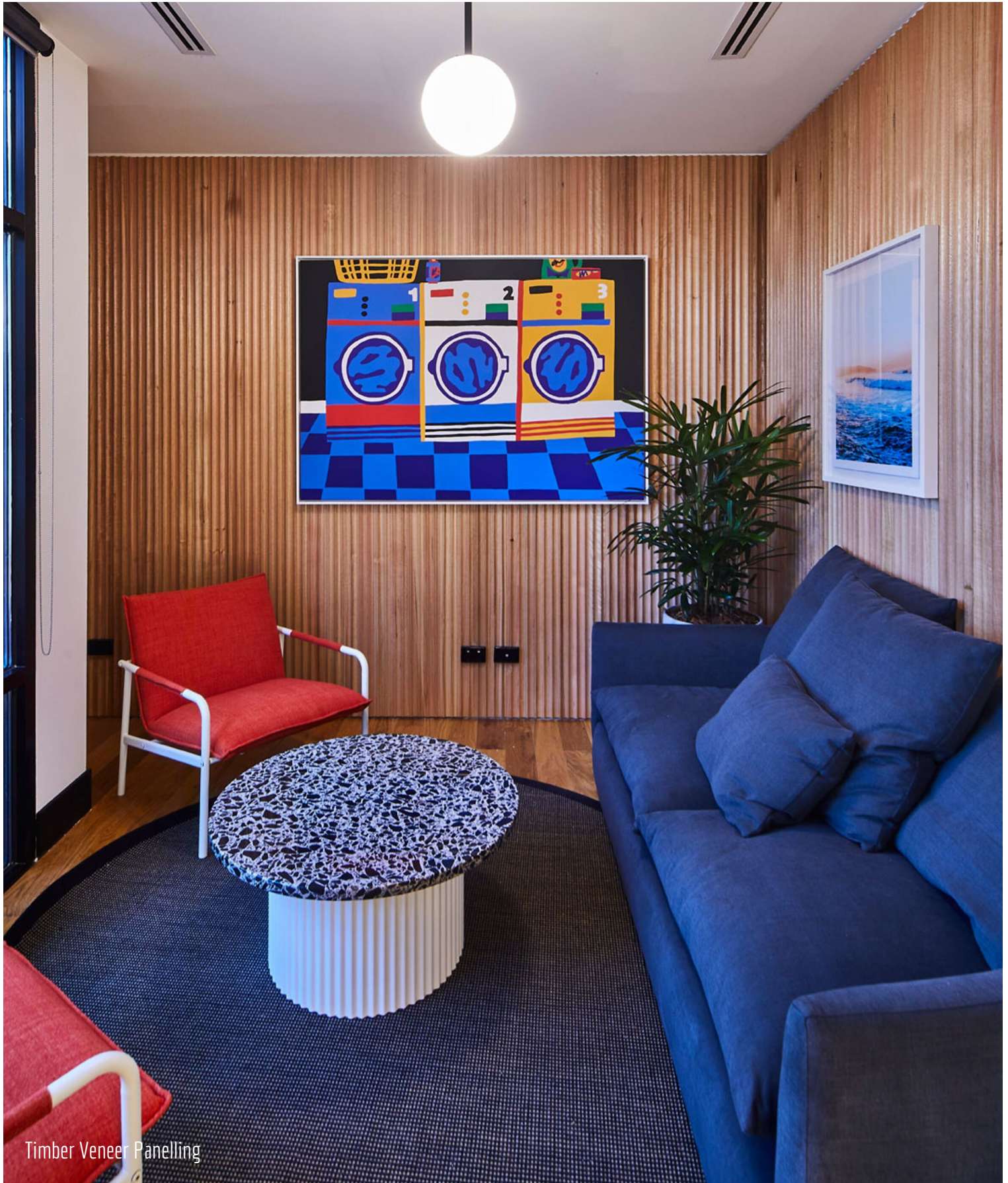


Outdoor Bench Seating & Planter



Pantry & Island

PROJECT PROFILE



Timber Veneer Panelling

PROJECT PROFILE



Phone Booths



MMF Island Hot Desk

PROJECT PROFILE

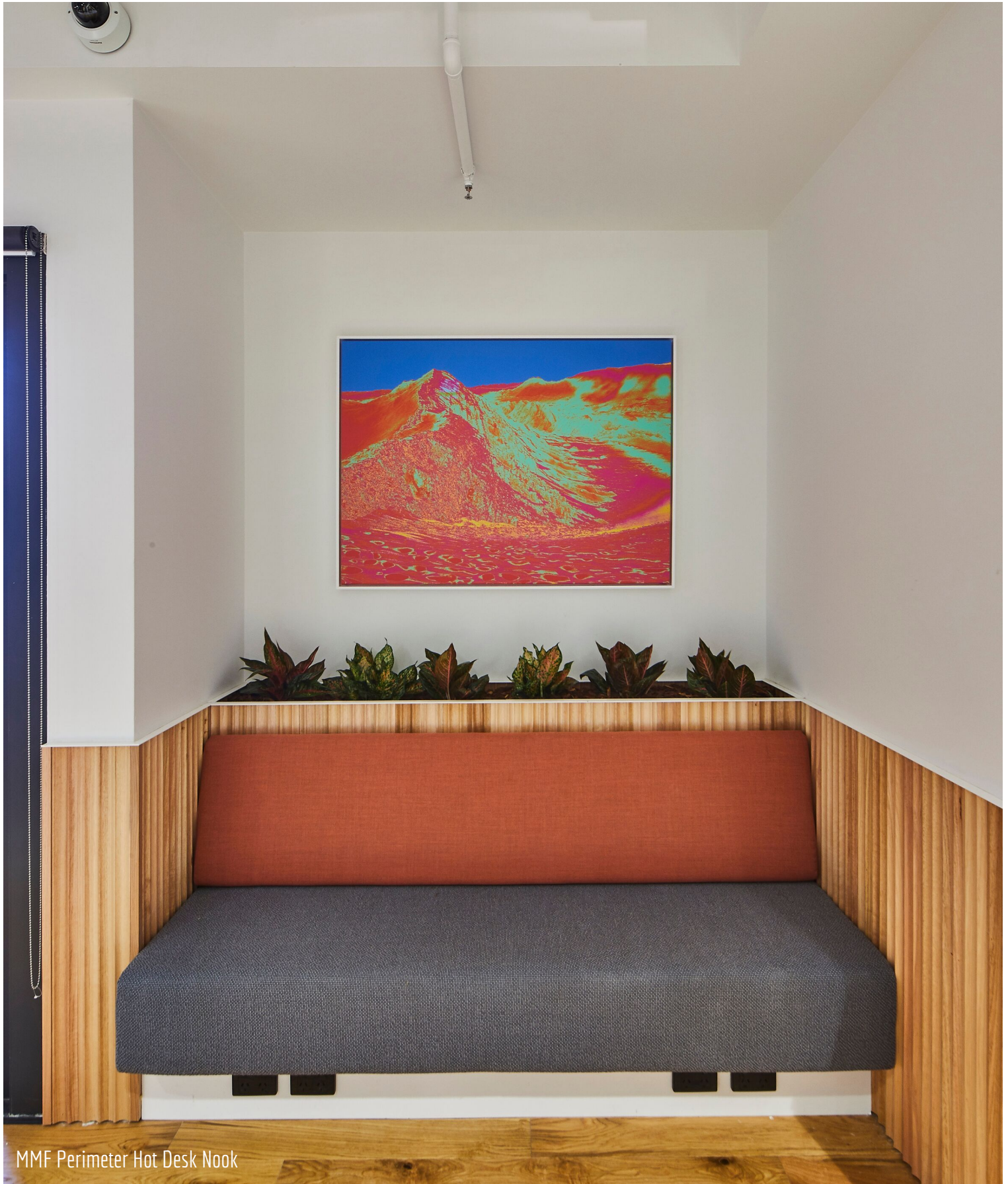


Meeting Nook



Community Bar

PROJECT PROFILE



MMF Perimeter Hot Desk Nook

PROJECT PROFILE



MMF Perimeter Nook



Solid Timber Panelling

PROJECT PROFILE



Fabric Wall Panelling

PROJECT PROFILE



Wall Panelling



Entry Nook

PROJECT PROFILE



Waiting Booth

PROJECT PROFILE



Pantry Nooks



Outdoor Bar



ASPEN
COMMERCIAL INTERIORS

1800 646 186

sales@aspeninteriors.com.au

www.aspeninteriors.com.au