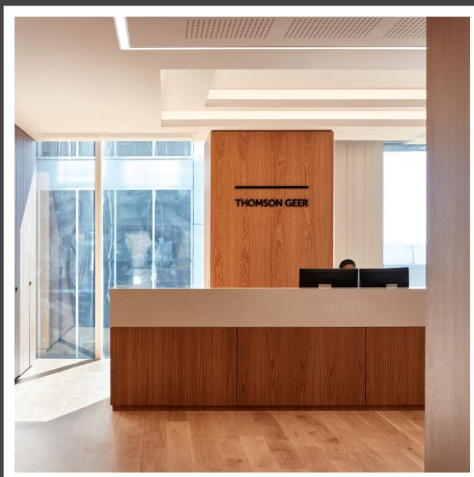


CORPORATE

Thomson Geer

60 Martin Place, Sydney



Project Name: Thomson Geer
Client: Unispace
Location: Sydney, NSW

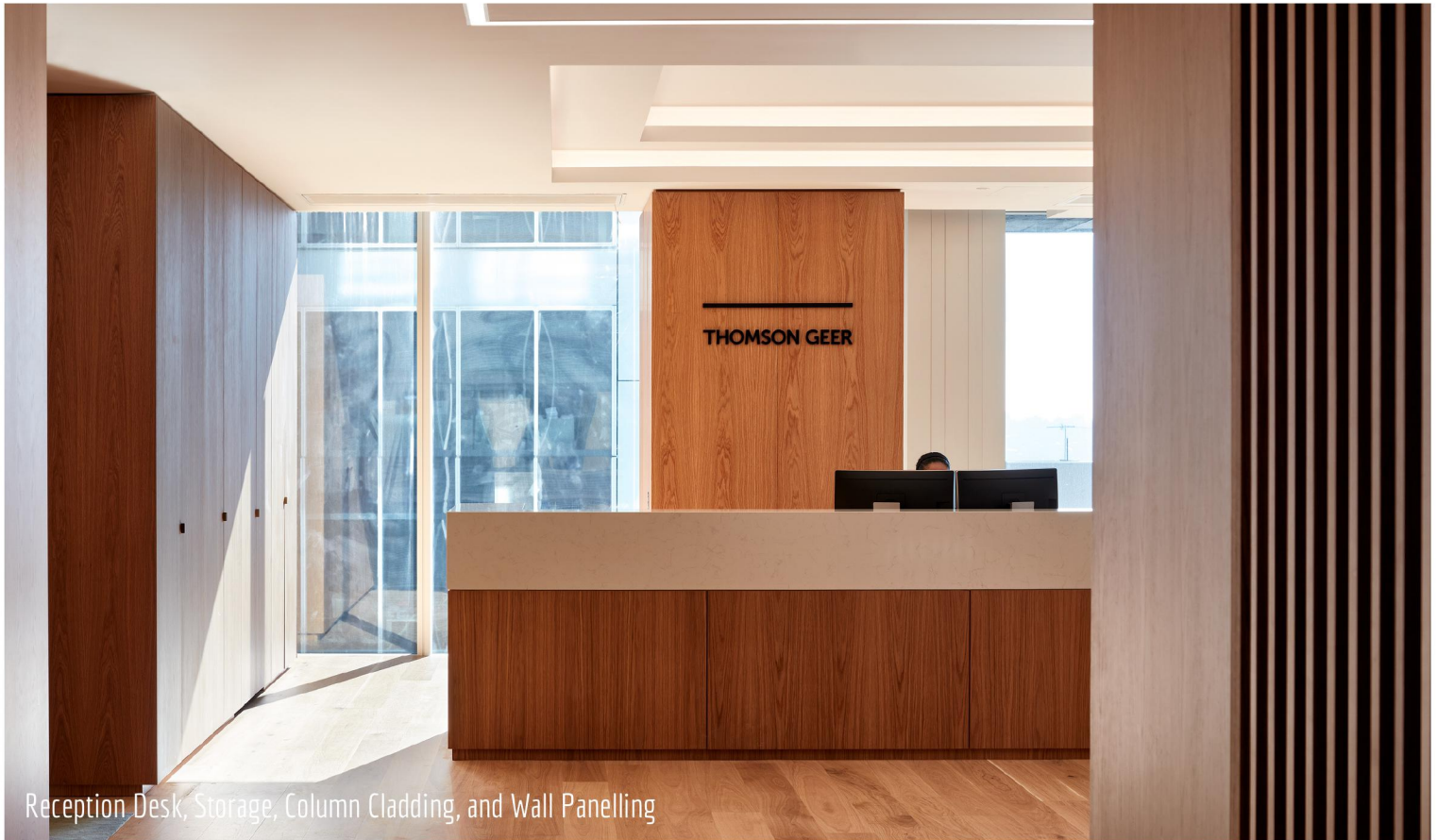
Scope of Work: Reception Joinery including Reception Desk, Storage, Column Cladding and Wall Panelling, Meeting Room Joinery including Wall Panelling and Credenzas, Lift Lobby and Corridor Panelling, Tea Point, Utility Joinery, Kitchens, Storeroom Joinery and Coat Cupboard, Doors throughout.

Overview: As a major corporate law firm, with offices in Sydney, Melbourne, Brisbane, Perth and Adelaide, Thomson Geer is one of the leading firms of its kind in Australia. Aspen Interiors were engaged by Unispace to fitout Thomson Geer's new offices at 60 Martin Place, Sydney. Spanning 3 light-filled floors in the heart of the CBD, this fitout was designed to hero American White Oak extensively throughout, reflecting the class and professionalism of the law firm. The final space, which boasts a large range of private offices, as well as large meeting rooms, open-plan workpoints and breakout areas, is one of true sophistication and considered simplicity.

PROJECT PROFILE



Reception Desk, Storage, Column Cladding, and Wall Panelling



Reception Desk, Storage, Column Cladding, and Wall Panelling

PROJECT PROFILE



Meeting Room Credenza and Wall Panelling, Doors

PROJECT PROFILE



Wall Panelling and Doors



Wall Panelling and Doors

PROJECT PROFILE



Meeting Room Credenza, Wall Panelling and Doors

PROJECT PROFILE



Meeting Room Credenza, Wall Panelling and Doors



Wall Panelling and Doors

PROJECT PROFILE





ASPEN
COMMERCIAL INTERIORS

1800 646 186

sales@aspeninteriors.com.au

www.aspeninteriors.com.au