



CORPORATE

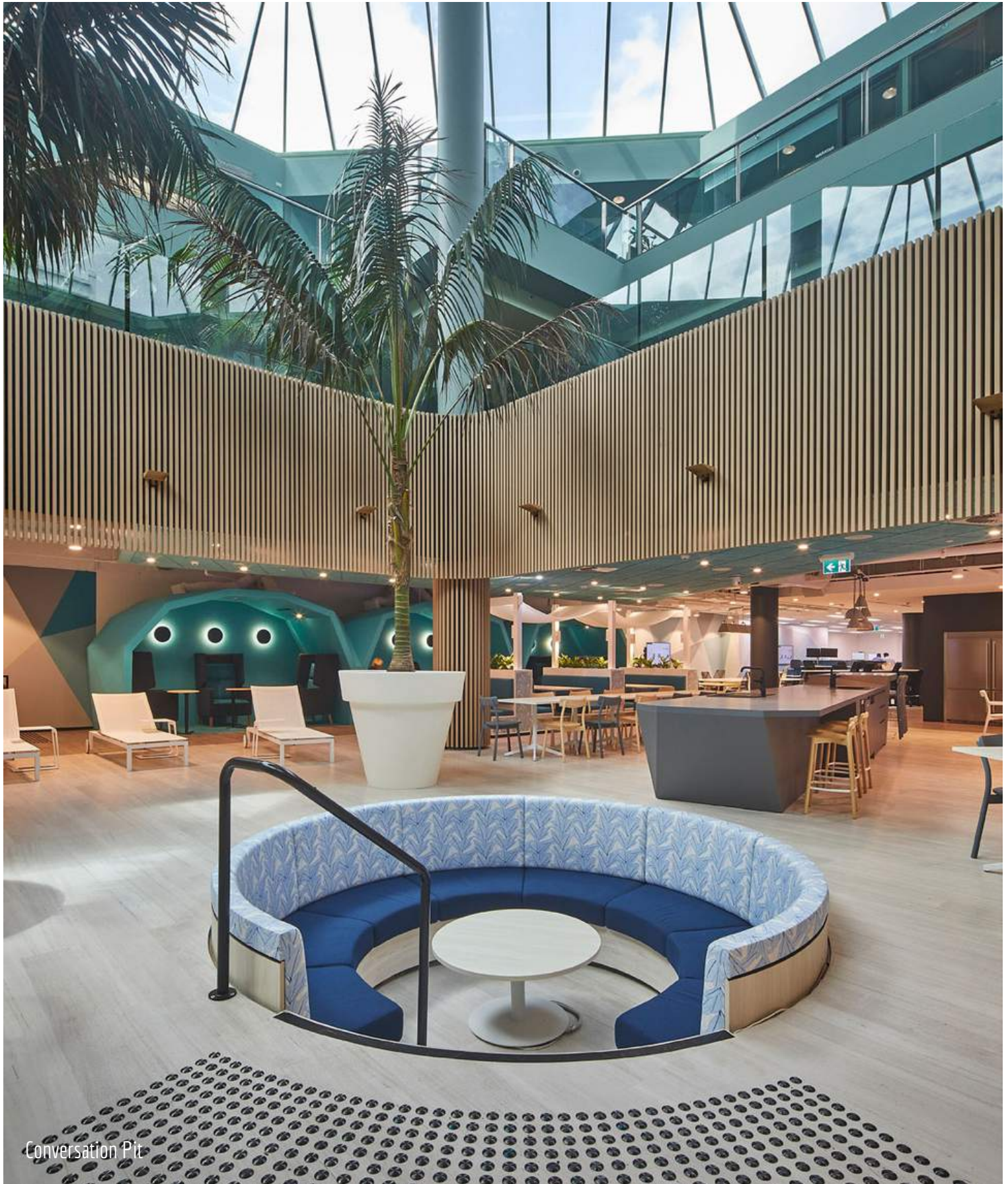
Project Name: Endeavour Energy
Client: FDC Construction and Fitout
Architect: WMK Architecture
Location: Huntingwood Drive, Huntingwood

Scope of Work: Island Bench, Conversation Point, Dividing Screen, Lockers, Feature Screen, Boardroom Credenza, Chill Out Zone Planter, Meeting/Focus Area, Banquette Seating, Coat Cupboard, Brainstorming Amphitheatre, Tech Hub, Wall Mounted Bench, Coffee Bench, Wall Panelling, Ceiling Feature, Fire Hose Reel Cupboard, Whiteboard.

Overview: Aspen Interiors were engaged by FDC Construction, working alongside WMK Architecture to manufacture the joinery for Endeavour Energy's 'Project Ark' located on the basement level, at Huntingwood Drive in Sydney's Greater West. Endeavour Energy is one of New South Wales' largest operators of electrical network distribution, with the responsibility of distributing power to over 2.4 million Australians. Their recently refurbished 'basement' provides a collaborative and motivational space, filling the gap between work and vacation. The 'Ark' joinery was delivered to a 10-week program and spanned over 1200m², with a combination of key meeting rooms, booths, breakout areas, chill out zones and collaborative brainstorming spaces. Finishes included fine textiles, rich veneers and moody tropical laminate hues that created the ultimate working paradise



PROJECT PROFILE



Conversation Pit

PROJECT PROFILE



Informal Meeting



Island Bench

PROJECT PROFILE



Amphitheatre seating



Boardroom

PROJECT PROFILE



Notepad Cove

Tech Hub

PROJECT PROFILE



Workspace



Lockers

PROJECT PROFILE



Meeting Room



Banquette Seating

PROJECT PROFILE

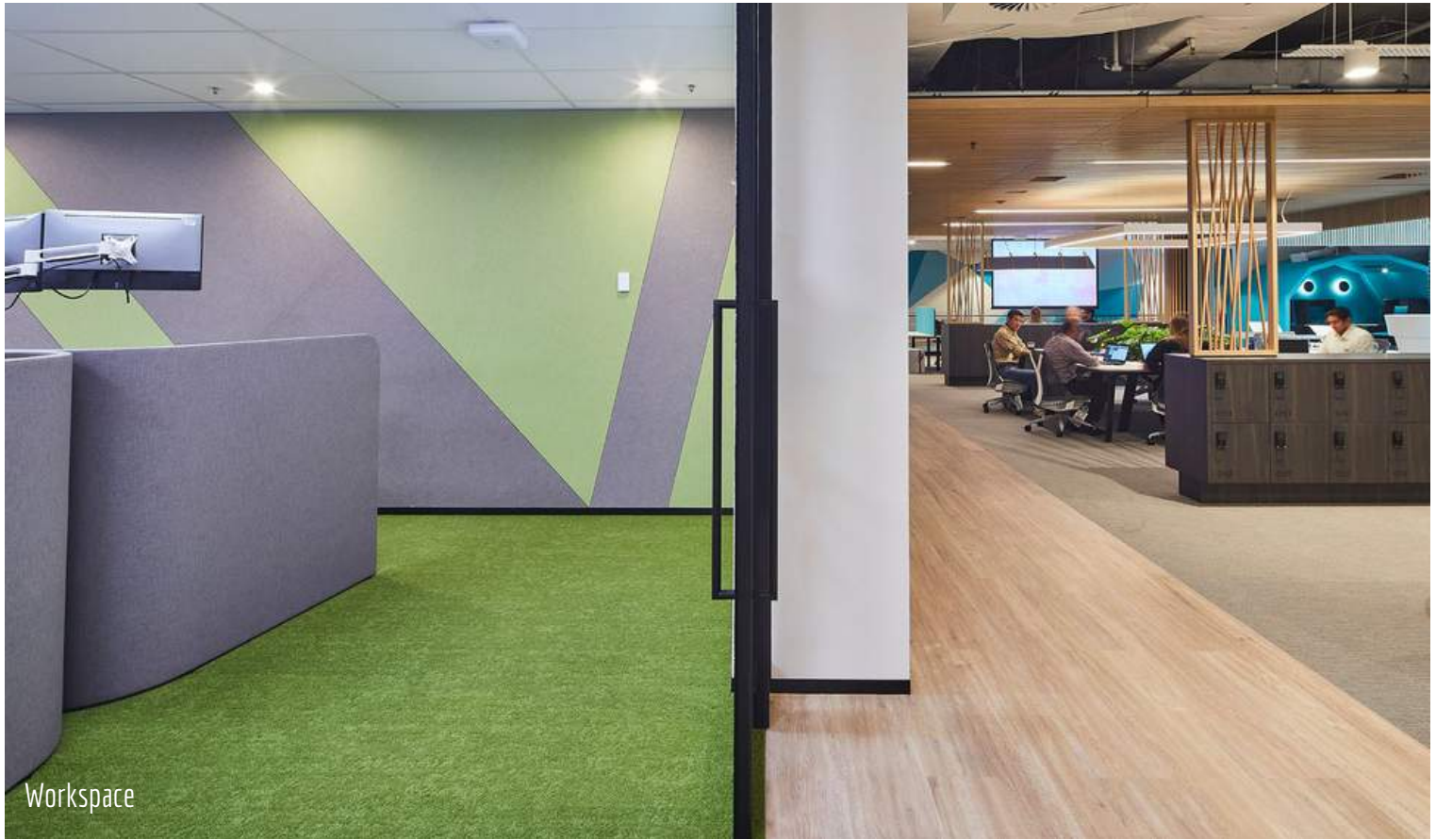


Conversation Pit



Lockers

PROJECT PROFILE



PROJECT PROFILE



Chill Out Zone

PROJECT PROFILE



Boardroom Credenza



Media Screen



ASPEN
COMMERCIAL INTERIORS

1800 646 186

sales@aspeninteriors.com.au

www.aspeninteriors.com.au