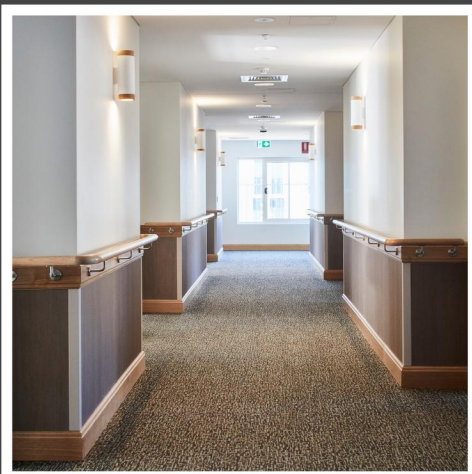


AGED CARE

Moran Aged Care

71-83 Samantha Riley Drive
KELLYVILLE NSW



Project Name: Moran Aged Care Kellyville
Client: PBS Building
Location: Kellyville, NSW

Scope of Work: Storage, Bedheads, Residential Unit Joinery and Kitchenettes, Ensuite, Reception Joinery, Admin Office Joinery, Hairdressers Salon Joinery, Kitchenettes, Pathology Room Joinery, Changeroom Joinery, Nurses Station, Utility Joinery, Computer Nook, Staff Lounge, Coffee Shop Joinery, Wall Panelling

Overview: After successfully completing the 6-level Moran Aged Care Fitout in Engadine, Aspen were once again engaged by PBS Building to undertake the manufacture and install of Joinery throughout the newly built Moran Aged Care Facility in Kellyville, NSW. Covering 2 floors, the new facility includes 120 residential units, as well as dining rooms, outdoor terraces, medical support rooms, multipurpose and activity rooms, a cafe, staff amenities, commercial kitchens, commercial laundries, store rooms and workshops.

PROJECT PROFILE



PROJECT PROFILE



PROJECT PROFILE



PROJECT PROFILE



PROJECT PROFILE





ASPEN
COMMERCIAL INTERIORS

1800 646 186

sales@aspeninteriors.com.au

www.aspeninteriors.com.au