

# AGED CARE

## Cranbrook Residential Aged Care

**Project Name:** Cranbrook Aged Care  
**Client:** ADCO Constructions  
**Designer:** Pike Withers  
**Location:** Kellyville  
**Scope of Work:** Detailed architectural joinery on 15 floors across 5 buildings including 50 residential retirement living suites. Reception Desk, Office, Wall Panelling, Mail Room, Bar Joinery, Island Bench, Vanity, Bathroom Joinery, Lockers, Gym Joinery, Community Library Joinery, Fireplace Joinery, Art Room, Fabric Wall Panelling, Lobby Fabric and Veneer Wall Panelling, Joinery in 50 Aged Care Suites including Kitchens, Laundries, Bathrooms, Robes, Storage Units, En Suites, Desks, TV Units.

**Overview:** Aspen embraced a large scope of works for the recent Cranbrook Care project on Fairway Drive Kellyville. The boutique retirement development boasts high end architectural joinery throughout the 50 living suites and community centre. Aspen's advanced project management systems, software and team enabled the successful delivery of hundreds of items of customised joinery across the 50 living suites. Cranbrook Care Community Centre includes facilities such as library, café, wellness centre and gym, all featuring detailed architectural joinery in luxurious finishes.



# PROJECT PROFILE

5 Buildings. 3 Floors. 50 Bedroom Suites.



5 Buildings. 3 Floors. 50 Bedroom Suites.



# PROJECT PROFILE



Timber Veneer Reception Desk & Wall Panelling



Timber Veneer Reception Desk, Wall Panelling & Aged Mirror Joinery

# PROJECT PROFILE



Antique Mirror & Timber Panelling Entry Feature

# PROJECT PROFILE

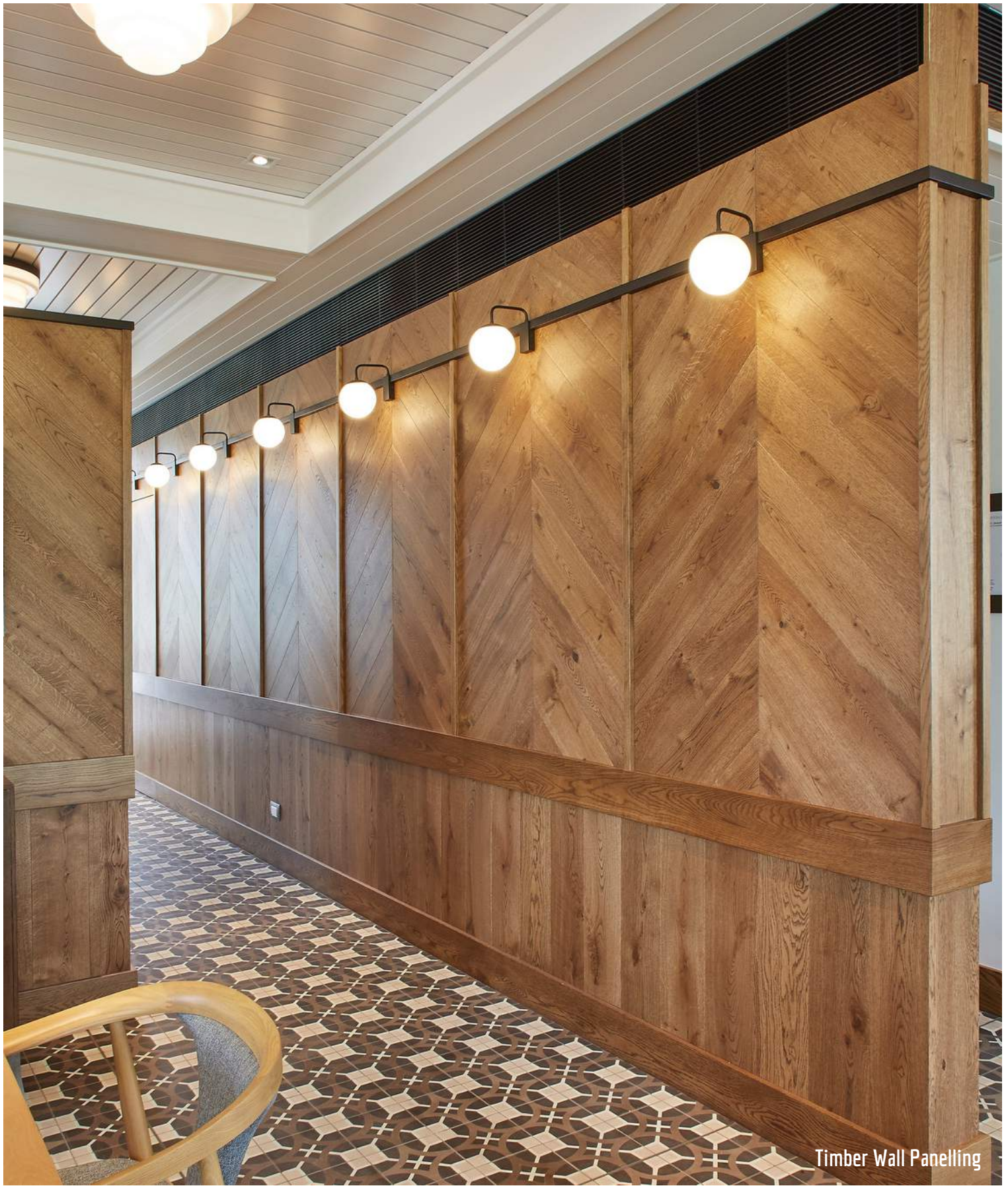


Concierge Desk, Banquette, Storage & Wall Panelling



Bar Joinery, Brass Mesh Feature Doors, Island Bench

# PROJECT PROFILE

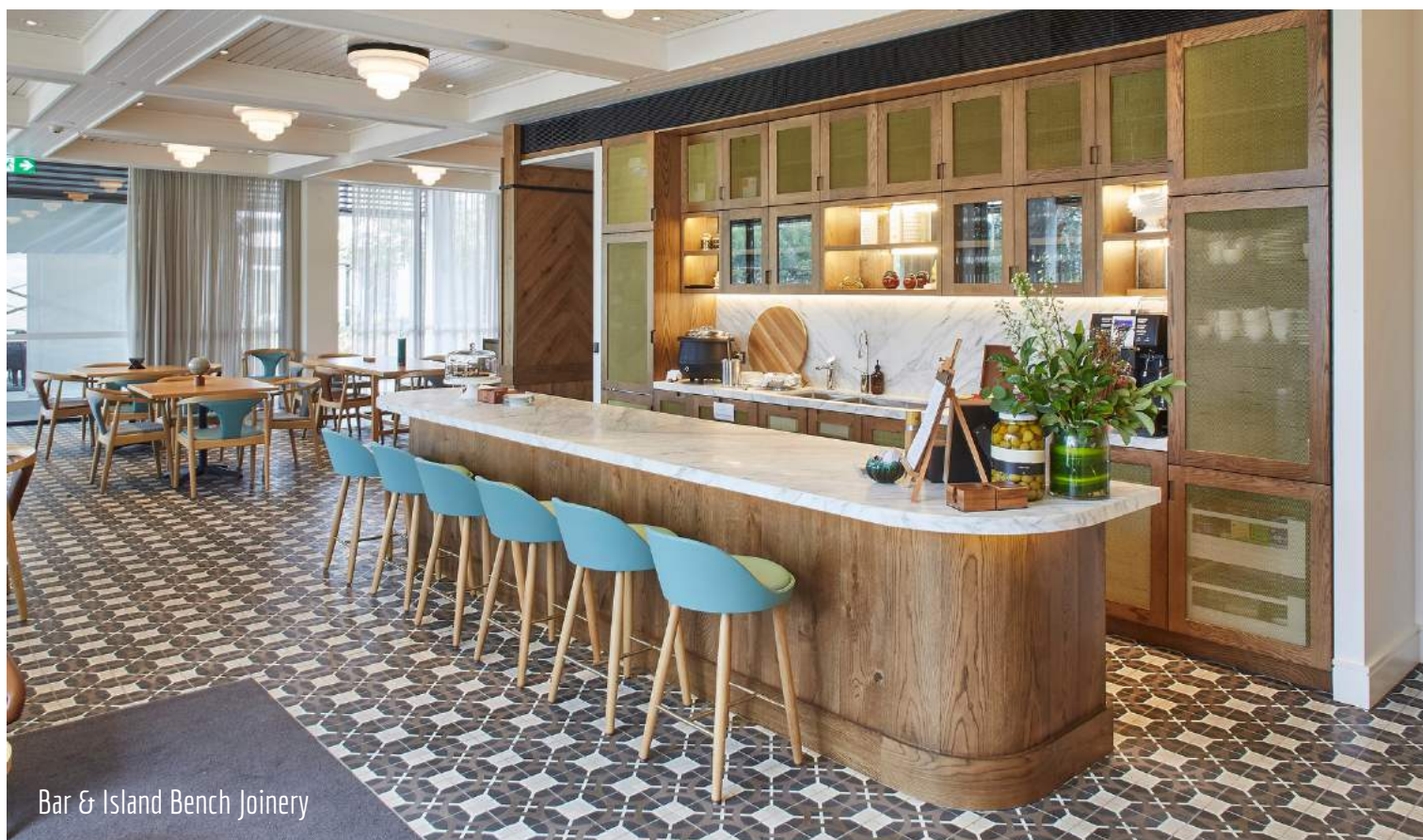


Timber Wall Panelling

# PROJECT PROFILE



Cafe Wall Panelling Joinery



Bar & Island Bench Joinery

# PROJECT PROFILE



Mallroom Joinery



# PROJECT PROFILE



Mailroom Joinery

# PROJECT PROFILE



Community Library Bookshelf Joinery



Community Library Joinery & Bookshelves

# PROJECT PROFILE



Community Library Bookshelves & Joinery

# PROJECT PROFILE



Fireplace Joinery & Library Bookshelves



Community Centre Fireplace Joinery

# PROJECT PROFILE



Community Centre Joinery & Library Bookshelves

# PROJECT PROFILE



Vanity & Storage Joinery



Timber & Upholstery Wall Panelling

# PROJECT PROFILE



Residential Suite Kitchen Joinery

# PROJECT PROFILE



Residential Suite Kitchen & Storage Joinery



Kitchen & Storage Joinery

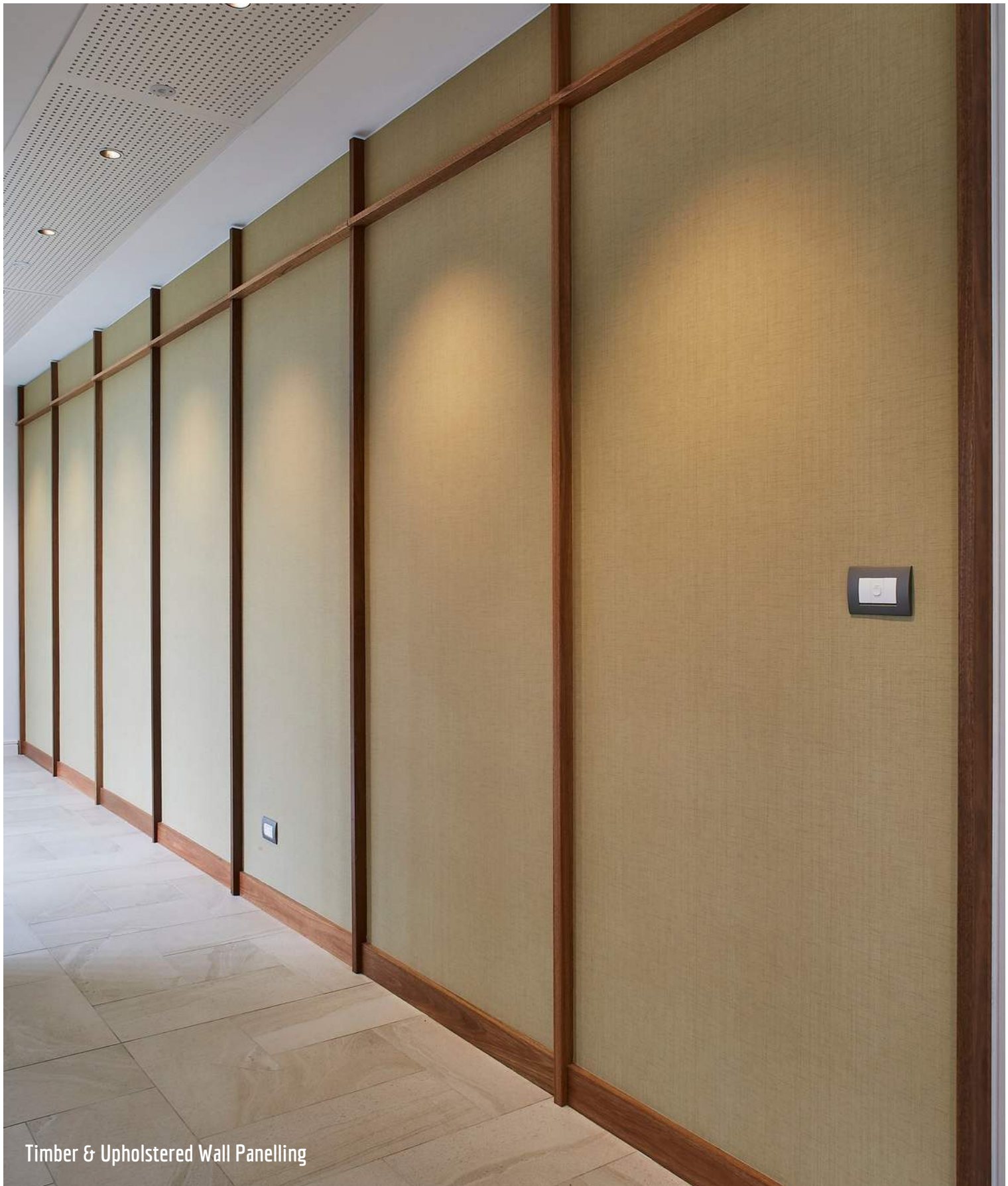


# PROJECT PROFILE



Kitchen & Storage Joinery - Residential Suite

# PROJECT PROFILE



Timber & Upholstered Wall Panelling

# PROJECT PROFILE



Ensuite Joinery



ASPEN  
COMMERCIAL INTERIORS

1800 646 186

[sales@aspeninteriors.com.au](mailto:sales@aspeninteriors.com.au)

[www.aspeninteriors.com.au](http://www.aspeninteriors.com.au)