

CORPORATE

ABBVIE



Project Name: Abbvie

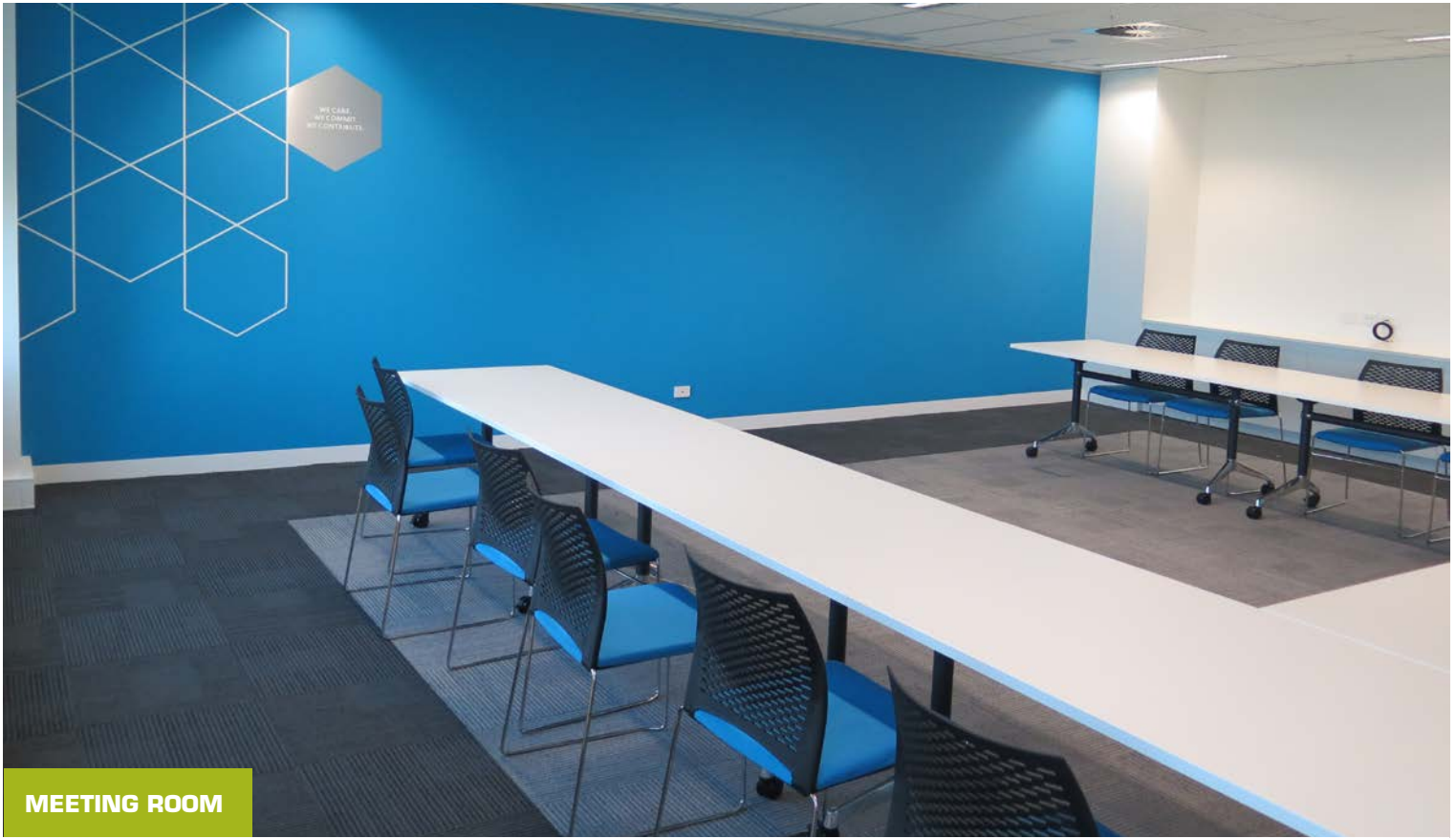
Client: Unispace

Location: Mascot

Scope of works: Reception Desk, Tea Point, Mail Room, Planter Boxes, Window Bench Seating, Formal Chat Booth, Library Bookcase, Semi Enclosed Collaboration Booth, Formal Bench Seating, Utility Joinery, Kitchenette, Catering Kitchen, Island Bench, Upholstered VC Collaboration Hub, Storage, Coat Cupboards, Open Shelving, Whiteboards, Lockers, Credenzas, Boardroom Credenza, Reception Seat, Lounges, Fabric Panelling, Timber Wall Panelling

Overview: Aspen recently worked with the team at Unispace to complete an inspirational fit-out of Abbvie's new Sydney offices. The fit-out is refreshing and functional with a theme of blues, greens and highlights of purple and yellow throughout. Verging on an activity based layout, the new office space features multiple open and semi-private meeting areas, from individual booths and open team banquettes to a semi-circular upholstered VC hub and face-to-face booths. In the entry, a curved feature banquette seat creates the base for a two storey living plant wall connecting the two levels of offices. The project incorporated a large scope of custom joinery including lockers, planter boxes, seating, wall panelling and the reception desk for a unique and refreshing fit-out.

PROJECT PROFILE



MEETING ROOM



WINDOW SEAT



PLANTER BOXES



ENTRANCE BANQUETTE SEATING



INDIVIDUAL QUIET BOOTH

PROJECT PROFILE



ENTRY WALL PANNELLING



STAFF LOCKERS



VC BOOTH SEATING



STAFF TEA POINT

PROJECT PROFILE



OPEN COLLABORATION



UTILITY STORAGE



RECEPTION DESK



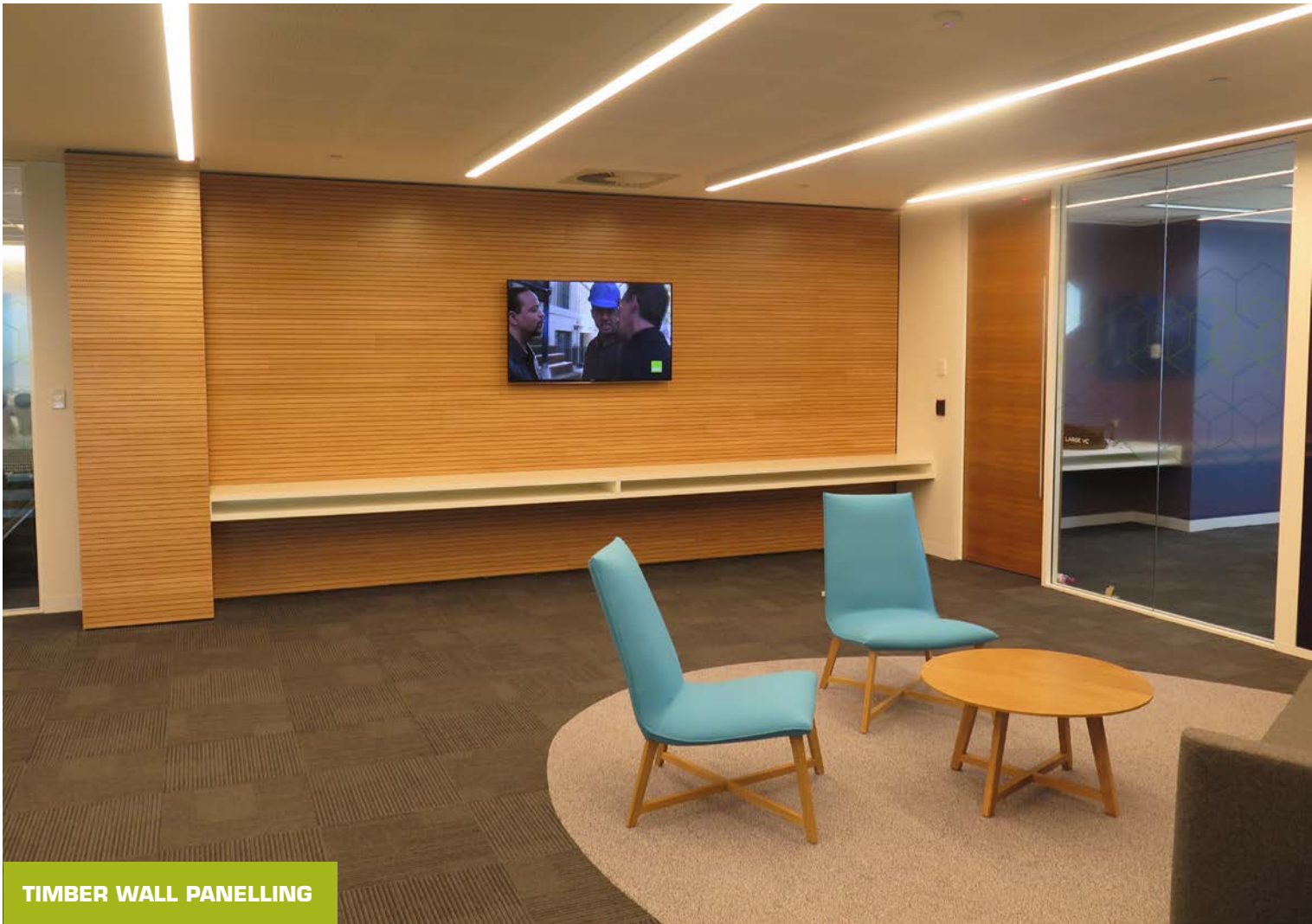
FACE-TO-FACE BOOTH



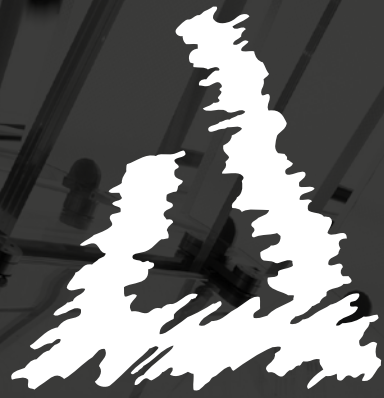
TEAM TABLE



RECEPTION AREA



TIMBER WALL PANELLING



ASPEN
COMMERCIAL INTERIORS

1800 646 186

sales@aspeninteriors.com.au

www.aspeninteriors.com.au