

# AGED CARE

## Moran Aged Care Engadine



**Project Name:** Moran Aged Care

**Client:** PBS Property Group

**Location:** Engadine

**Size:** 11,500m<sup>2</sup>

**Scope of works:** Nurses Station, Sitting Area, Eating Area, Bedroom Joinery, Ensuite Joinery, Storage, Bookshelves, Wall Panelling

**Overview:** Aspen worked with PBS Property Group to fitout six levels at Moran Aged Care Engadine. The scope of works included joinery items for 142 rooms, nurse's stations, dining areas, reception area, as well as a host of tea stations and staff amenity fit-outs. The warm & homely fitout features a range of areas to cater for the needs of the aged including spacious sitting & eating areas, bedroom suites, ensuites, kitchenettes, serveries & nurse's stations. From design refinement through to installation, the focus of the fitout was on quality furniture & joinery in a defined lead time. The result; a comfortable & serviceable facility to care for the senior citizens at Moran and satisfy the client's requirements.

# PROJECT PROFILE



5 NURSES STATIONS



5 SERVERIES



CORRIDOR WALL PANNELLING



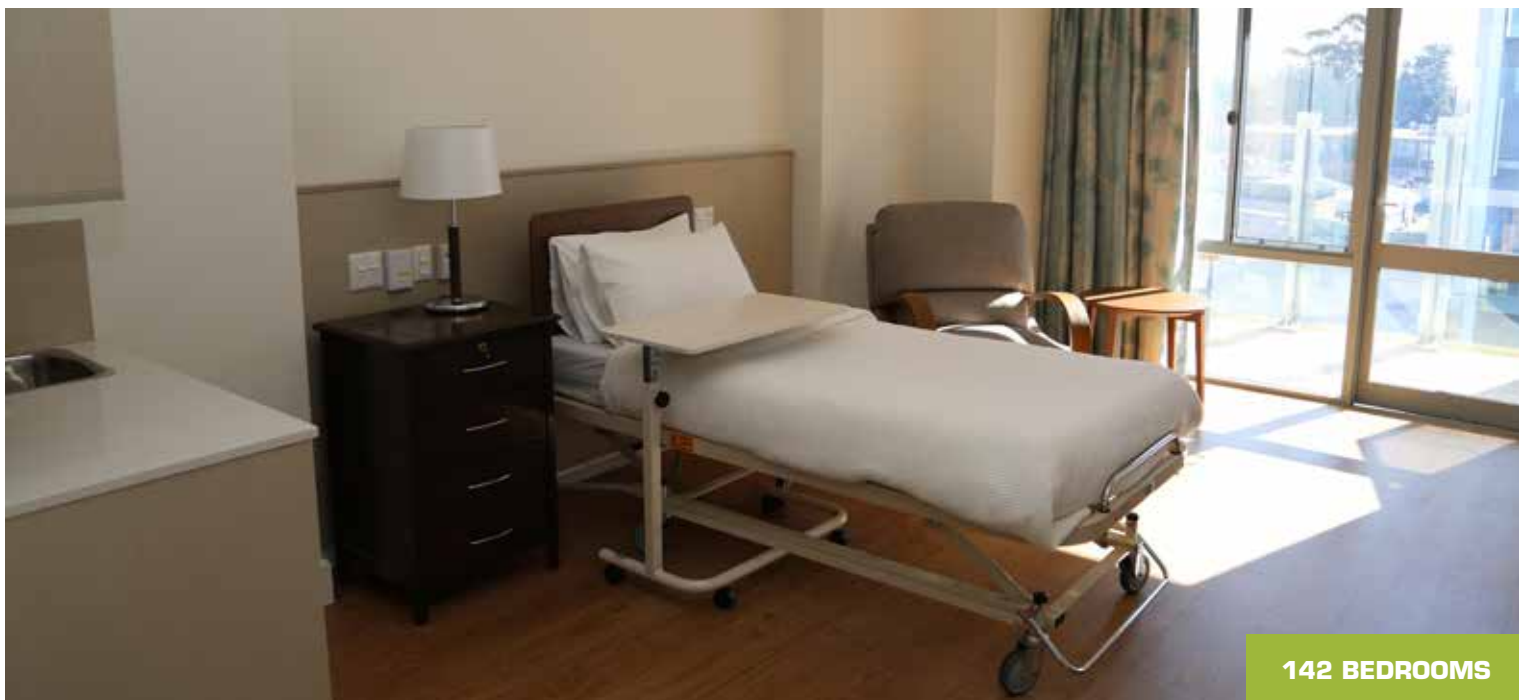
83 SELF CARE KITCHENETTES



5 BUFFETS



142 WARDROBE AND DESK UNITS



142 BEDROOMS





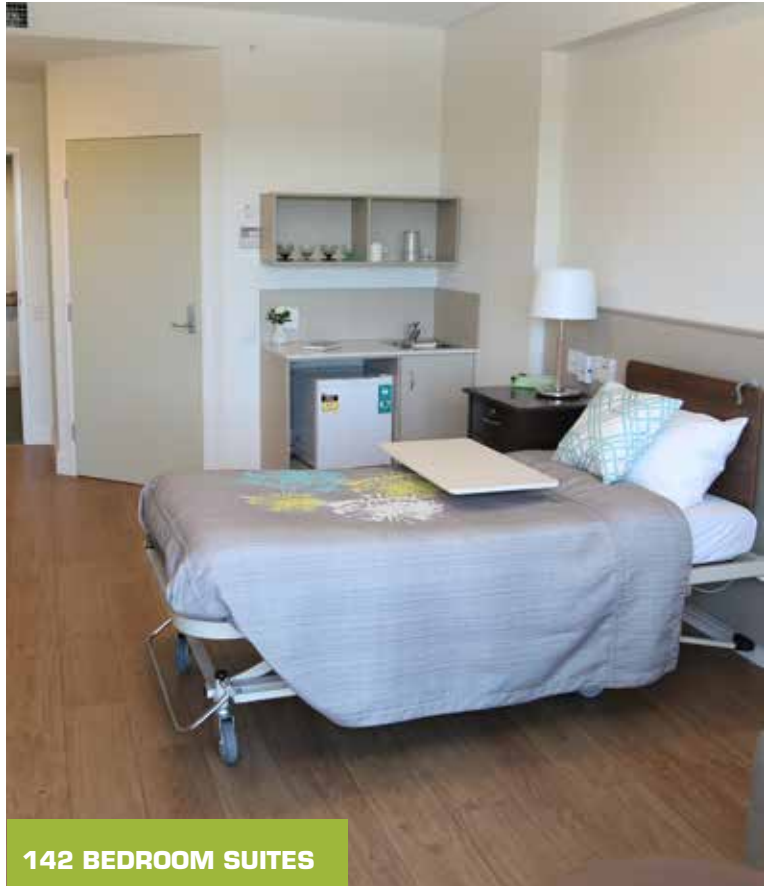
5 DINING ROOMS



SITTING AREA



SERVERY



142 BEDROOM SUITES