

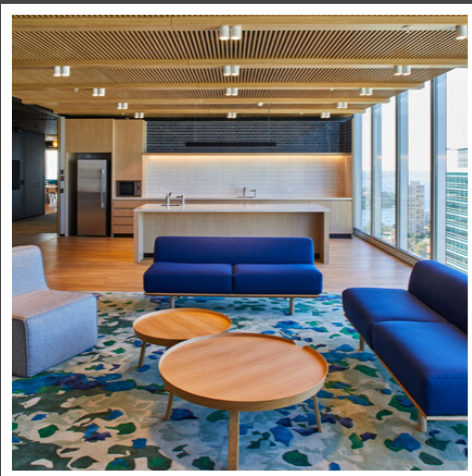
CORPORATE

100 Mount Street, North Sydney
Sydney, NSW

Project Name: 100 Mount Street
Client: Shape Australia
Designer: Geyer
Location: Sydney, NSW

Scope of Work: Wall Panelling, Lockers and Coat Cupboard, White Boards, Meeting Booths, Bin House, Lobby Planters, Prayer Room, Build Room, Wellness Room, Banquette Planter, Coat Cupboard, Credenza, Phone Booths, Meeting Rooms, Quiet Rooms, Kitchen, Ceiling Panelling, Reception Area, Sign-In and Service Island, Chairman Office Desk, Feature Partition Wall, Stair Planter, Freestanding Banquette Planters, Small Hub Island, Lockers, Column Cladding

Overview: Aspen were engaged by Shape Australia, to complete joinery and wall panelling for a 17 level project in North Sydney. The project consist of 3 unique levels and 14 similar levels. Aspen were required to coordinate several high detail finishes as well as working in with other trades to achieve the design intent and keep to the tight schedule. The furniture and joinery caters for a range of working styles and has created a fresh, vibrant environment for the team.



PROJECT PROFILE



- Level 18
- Level 17
- Level 16
- Level 15
- Level 14
- Level 13
- Level 12
- Level 11
- Level 10
- Level 9
- Level 8
- Level 7
- Level 6
- Level 5
- Level 4
- Level 3
- Level 2

Overview

PROJECT PROFILE



Column Cladding



Meeting Room

PROJECT PROFILE



Meeting Booths



Reception Area

PROJECT PROFILE



Ceiling

PROJECT PROFILE



Small Meeting Room

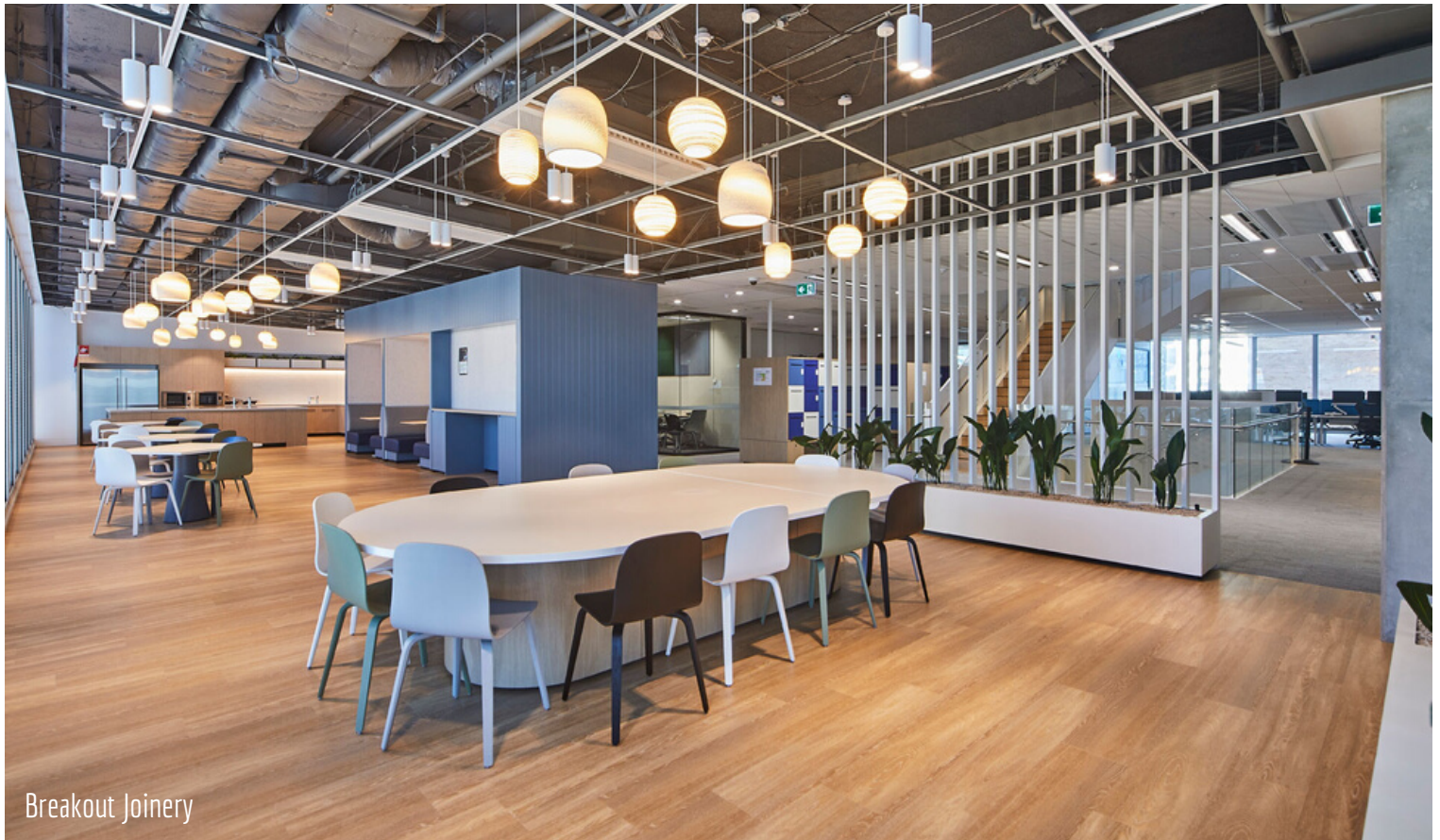


CEO Office

PROJECT PROFILE



Stair Planters

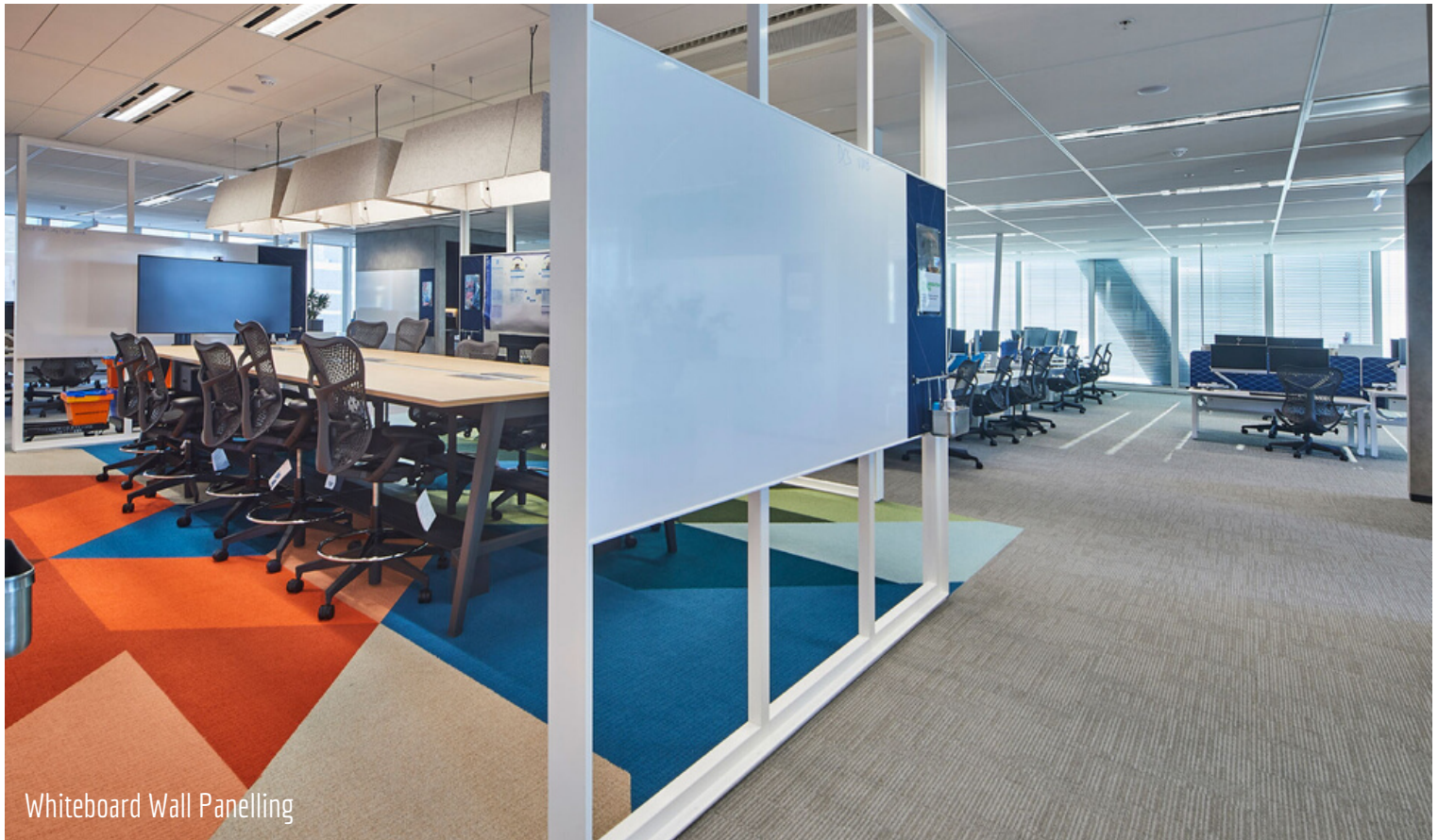


Breakout Joinery

PROJECT PROFILE



Common Kitchen



Whiteboard Wall Panelling

PROJECT PROFILE

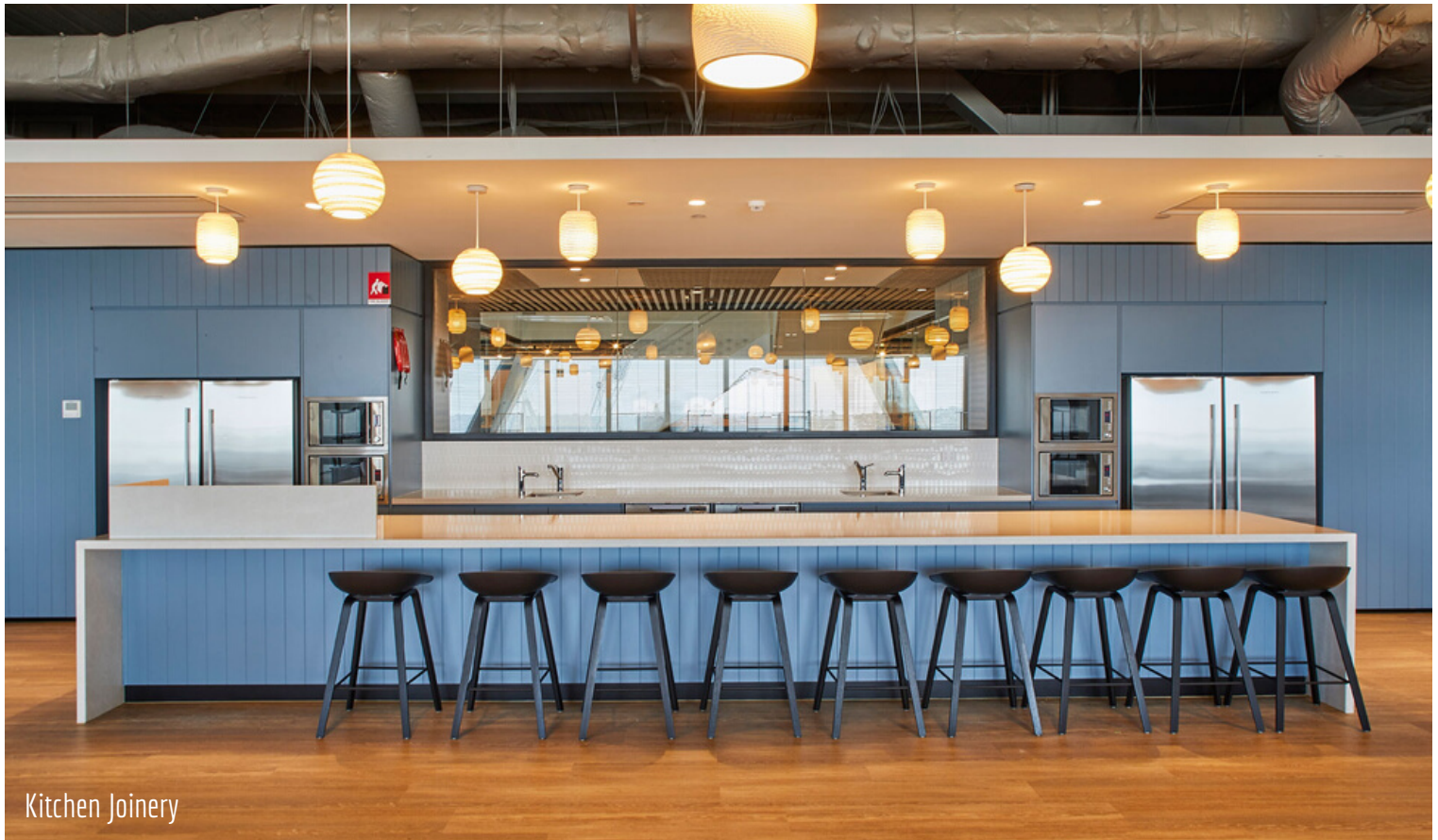


Wall Panelling

PROJECT PROFILE



Wall Panelling & Ceiling



Kitchen Joinery

PROJECT PROFILE



Lockers



Curved Wall Panelling



ASPEN
COMMERCIAL INTERIORS

1800 646 186

sales@aspeninteriors.com.au

www.aspeninteriors.com.au